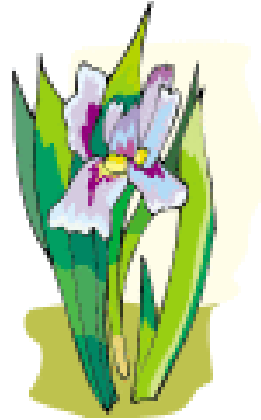




SUMMERFAIR
CINCINNATI

Supporting and Promoting
Artists and the Arts Year-Round

Volume 43
Issue 4
April 2010



President

Dave Ziegler

Vice President

-Finance

Dustin Minton

Vice President

-Membership

Jayne Utter

Vice President

-Operations

Roger Harding

Trustee

Kelly Boschert

Executive Director

Sharon Strubbe

Membership Meeting

Date: April 19

Where: Anderson Station

When: 7 p.m.

What:

**Sign up for Fair shifts,
learn details about the fair,
win prizes!!**

Happy Spring!

FAIR NEWS

April Showers – Bring May Flowers – And Perfect Days in June!!

Two short months and the fair will be over! So much work to do, then so little time to enjoy the event.

Things are really coming together. The program is being assembled. Artists are about to be placed in their favorite spots. What needs to be completed? What needs the most work? We need you!! Sign up for your shifts. With just three short shifts you will receive one of the very popular 2010 t-shirts! You may think I'm going out on a limb when I make this announcement but I truly believe we will sell out of all merchandise this year. Yep, t-shirts, tote bags and posters will be gone, history, outa' here!! As for the weather I'm still working on that but things are looking good for back to back perfect years!

If you haven't been to a meeting in a while please make sure to come April 19 to the Anderson Station and then May 24 (the fourth Monday thanks to Jimmy Buffet) to the Chicken Walk-thru. *The first three people to email Jayne at connect@wildjayne.com will be in a drawing at the Chicken Walk-thru.* You will be able to catch up with all of us and get those prime positions on the sign-up lists. Also there are some major changes to the layout you will want to see before the grounds fill up with artists and patrons.

Please announce to your friends and family the **Click n Print ticket** site is up and running. You can get more info at www.summerfair.org or go to <https://t.l.clicknprint.com/tix/SilverStream/Pages/pgIndex.html?siteID=1755> to make your purchase.

See you all soon!! Oh and must be present to win!

Jayne Utter

2010 Fair Chair

Fair Rental Chair

I really need counts of chairs, tables, booths, from all of the division heads by April 15, 2010. I would appreciate it if you could put this into the April newsletter. Walkie talkies will be the same as last year, but I need names of people who will be using them. *The first three guys to kiss the fairchair on the cheek at the April 19 meeting will be in a drawing at the Chicken Walk-thru.* Also need stage request for the acoustic stage if so needed.

Thank you,

Bob Hinman, r.hinman@fuse.net

Why is 280 important?

Is that the number of days til the Fair? ERRRRRT, wrong (the fair is much, much closer). It's the number of days til Christmas? ERRRRRT, wrong. This number is closely tied to Summerfair 2010!! Here is your answer, 280 is the number of shifts that we need to fill with you, our Summerfair Member Volunteers. At this point we are working our way to in fill each of these. At this time are have 107 of 280 filled. So please review the areas you can volunteer (there is a new "area" this year!!!!) so we can make sure all the bases are covered. Also, remember with three shifts you'll get a fabulous 2010 t-shirt to enjoy all year long. To sign up for shifts or if you have questions, contact Kelly (kelly.boschert@gmail.com / 513.300.2424).

YA welcomes Jan Brockman back as Youth Arts Chair, and we have many returning and some new entertainers! Brad Eickhoff Magic Pro, Connie Ferguson School of Dance, Country Step Cloggers, Peraza's Music Workshop-youth violins, Carly's Puppet Theater, Face-painting by Kat, Karla Marshall Balloon artist, Progressions Dance, and Anderson Steppers. How's that for news?
-:)Koben Hinman

WANTED:

CALL FOR MATERIALS

For Youth Arts - new craft -

Youth Arts is doing some really fun and new crafts this year to keep all the kids busy and we need your help getting supplies since we are on a limited budget. Please save clear plastic jars and the lids to them (an example would be like the ones that peanut butter comes in). It would be helpful if the labels could be removed and the lids kept with the jars. Thanks to everyone for any help they can give. Please contact Jan Brockman for more information.

Summerfair Sign Ups are Here!!

We are taking sign ups for your Summerfair 'Green Shirt' Shifts. The file is huge so you will not find it here, but please email Kelly for any interested shifts and she'll be happy to pencil you in. These are the areas we are looking to fill for the 2010 Fair:

Admission Gate Exhibitor Registration and Check-in
Exhibitor Relations VIP Concessions/ Hospitality
Judge Escort Outside Volunteer Check-in
Poster & T-shirt/ Visa & MC/ Membership & Info Booth (all in one of 2 locations!)
Signs Traffic
Youth Arts

For additional information, please see below the Green Shirt Shift Area Descriptions; it is a quick break down of each of these areas. The actual, current sign up sheets will be available for review at every membership meeting between now and the Chicken Walk-Thru. Remember, sign up early and often!! Thank you!

Kelly Boschert, kelly.boschert@gmail.com

Green Shirt Shift Area Descriptions

Admission Gate. West or East-Your job will be welcome patrons to this year's event. Assist in giving directions, taking tickets, distributing/collecting programs, stamping re-entry hands and answering questions. The admission gate areas have a supply of outside volunteers (non-Summerfair members) to over see and interact. This is an on your feet job often time working in the elements. *Shift times: two (2) hour increments Friday through Sunday, from show open until one hour before show close.*

Exhibitor Registration/ Check-in, East/ West. This area interacts with artists- checking credentials and distributing information packets. Artists often have questions and concerns to voice, and need direction. This is an on-your-feet job, working in the elements. You will have a walkie- talkie for additional guidance and support. *Shift Times: Thursday midday to early evening and Friday morning- shift times differ at a minimum three (3) hours.*

Exhibitor Relations. Throughout the fair grounds, exhibitor relations is the position with interaction among patrons and artists. While this job is for artist/ exhibitor support (booth sitting and troubleshooting) the job entails wandering a designated route. This area has a customer service aspect since often the Summerfair uniform attracts patron questions or concerns. This is an on-your-feet job, working in the elements. You will have a walkie- talkie for additional guidance and support. *Shift Times: Friday through Sunday, in two (2) hour increments, from show open until show close.*

VIP Concessions/ Hospitality. Located 'backstage' on the second floor at Moonlite Gardens, this position interacts with artists, exhibitors and Summerfair members. You will be offering and selling snacks and drinks to these hard working people. You will have a group of outside volunteers to assist you. This is an on-your-feet job, working inside Moonlite Gardens. *Shift Times: Two (2) hour increments, Thursday afternoon, Friday through Sunday early morning until event close.*

Judge Escort. For this job you will be working one-on-one with a Summerfair judge; assisting him or her as a guide. Duties include escorting judge from selected booth to booth, introducing judge to exhibitors, and marking the booth. *The first three gals to comment on how nice the fairchair looks at the April 19 meeting will be in a drawing at the Chicken Walk-thru.* This is an on-your-feet job, working in the elements. *Shift Times: Friday, 2 p.m. until completed.*

Outside Volunteer Check-in. Located at the check-in booth, near the trailer. For this job you will sign-in and provide directions to volunteers as they arrive to work their shifts. You will answer questions and give basic directions and information. This position has a customer service aspect due to its location. Questions maybe posed by Coney Island and Summerfair patrons. This area is in a covered booth, with the opportunity to sit when not busy with patrons. *Shift Times: Friday through Sunday in two (2) hour increments; from before show open to before show close.*

Poster/T-shirt/Visa/MC/ Info/ Membership, East/West locations. This is a multi- faceted customer service position that wears many hats. From assisting with the sale of merchandise to answering questions and offering information about Summerfair Cincinnati, there are many needs in one place. This is in a booth area and has the opportunity to sit within a covered space. *Shift Times: Friday through Sunday, in two (2) hour increments; from show open to show close.*

Signs. Location Fair and Coney grounds- this is a pre-show job that has you moving around selecting and affixing the appropriate signs for the Fair on Coney Island grounds. This is an on-your-feet job, working in the elements. *Shift Times: Thursday, 10 a.m. to 12 p.m.*

Traffic. This job has you working as a traffic director, assisting exhibitors as they move on and off the grounds; reminding them of the ground rules and making sure pedestrians are safe. There is an aspect of customer service as you will receive questions directed to this position. This is an on-your-feet job, working in the elements. *Shift Times: Thursday 12 p.m. to 5 p.m., Friday 8 a.m. to 1:30 p.m., Sunday, 6 p.m. until all exhibitors have departed the grounds.*

Youth Arts. You will be working with children and those who are children at heart, helping them become future artists. This can be a messy/fun area so dress appropriately. This is an on- your- feet job, working under a sheltered area. *Shift times: Saturday and Sunday, in two hour increments, from show open to show close.*

Summerfair Cincinnati Event Calendar

April

16

*Scholarship Exhibition Closing Reception; 6-8 p.m.
Anderson Center, lower level Atrium*

19

*Membership Meeting; 7 p.m.
Anderson Center*

May

24

*Walk Thru-Chicken Dinner; 6:00 p.m.
Coney Island*

June

4, 5 & 6

*Summerfair
Coney Island*

